



MANAGEMENT PORTAL

For lot / M2M

Truphone is the only global mobile network in the world.

Our technology transforms the existing multi-local structure of the mobile industry to deliver the service demanded by globalisation.

TRUPHONE



ABOUT TRUPHONE

Globalisation, mobilisation and Internet of Things (IoT) / Machine-to-Machine (M2M) are mega-trends that are fundamentally changing our environment - people, device, cars and computers are increasingly dependent on the mobile ecosystem.

Built to be local and global at the same time, Truphone is the only mobile network in the world that expands the reach of businesses and individuals beyond the borders of their home country.

Proving the global mobile model, today Truphone delivers an integrated local value proposition across eight countries – US, UK, Germany, the Netherlands, Spain, Poland, Australia and Hong Kong – delivering patented multi-identity solutions & superior quality across the world.

Growing rapidly, we serve over 3,000 international businesses across all market sectors – including seven of the largest global investment banks and major international brands across the world.

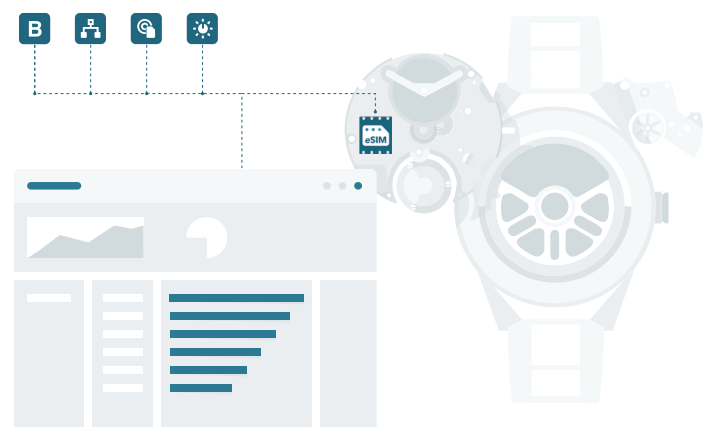
Truphone's unified global network, centralised operating core and patented quality assurance capability are the ideal foundation for our IoT/M2M connectivity service and management platform.

Truphone IoT/M2M Connectivity Management Platform

Our IoT/M2M Connectivity Management platform allows enterprises to manage the connectivity service provided by mobile network operators.

Control is enabled across the full life cycle of connectivity, subscriptions, devices and SIM cards, ensuring that operators and enterprises can reduce time to market and quickly capitalize on new and evolving M2M-related revenues.

Truphone's unique architecture is modular, scalable and designed to help address and monetise emerging IoT/M2M opportunities.



Operational Benefits

Powerful and easy to use

Configurable, customizable and extensible by operators.

Feature-rich

All relevant service management capabilities and more.

Future-proof

Implemented using latest best-practices and technologies.

Light touch

Lightweight integration with existing network or using Truphone's global network and IoT/M2M SIM cards.

Flexible deployment

Managed on-premises, in the cloud or hybrid deployment.

Lower costs

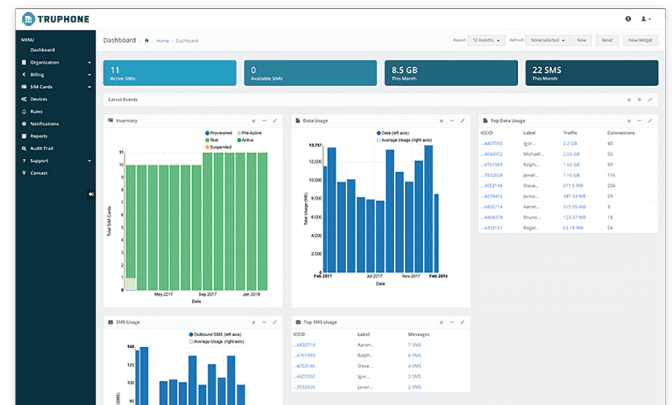
Architectural, integration and deployment options reduce overall cost of operating the platform.

Single cost effective integration

Faster and lower-cost integration, extension and operating.

Key Management Features

- ✓ Customer Management
- ✓ Life-cycle Management
- ✓ Charging and Billing
- ✓ Dynamic Dashboards
- ✓ Automation Rules
- ✓ Bulk/Scheduled Actions
- ✓ Reports
- ✓ Analytics
- ✓ Permissions
- ✓ Notifications
- ✓ Two-way SMS
- ✓ Audit Trail
- ✓ Support Ticket
- ✓ Traffic Analysis
- ✓ Real-time Troubleshooting
- ✓ System Status
- ✓ IP Address Management
- ✓ Exports (e.g., CSV)
- ✓ Tools (e.g., watchdog) API



Powerful but easy to use management portal

Business Benefits

Differentiate

Feature-rich IoT/M2M connectivity service and platform.

Increase Arpu, margin and retention

Differentiated value adding solutions drive lifetime value.

Accelerate time to market

Innovative, market tested. open platform to speed up initial deployment and to scale.

Automate

Feature-rich IoT/M2M connectivity service and platform.

Reduce costs

Reduce ongoing technology costs and support enquiries from customers.

Create new business opportunities

Empower resellers of the IoT/M2M connectivity service; or resell connectivity from partners.

✉ business@truphone.com

🌐 truphone.com

